



interventek
subsea engineering

Subsea Abandonment Tree



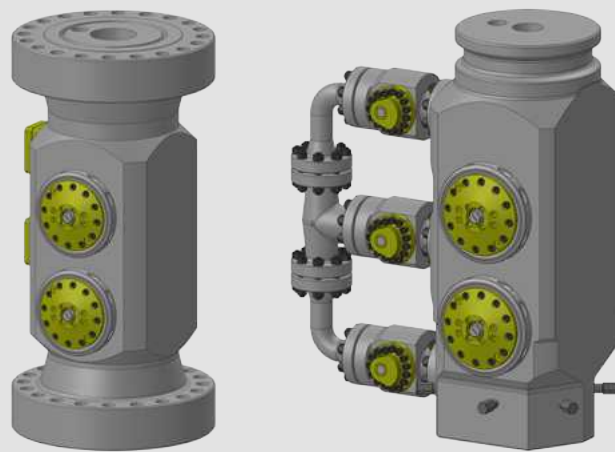
The Subsea Abandonment Tree is a large bore hydraulically controlled valve system that provides a stress free solution to open water well intervention operations. The valve weighs only 2.5 tons but provides heavyweight well protection for any compromised Xmas Tree valves. It is installed directly above the subsea production Xmas Tree prior to temporary suspension or abandonment.

Innovative 'shear and seal' technology that out performs its rivals

The unique Revolution Valve is the only valve on the market that does not compromise its ability to seal due to its novel shearing action and does not use any elastomer components for fluid containment. This is the best line of defence in high pressure, high temperature environments and when a fast and reliable seal is required. It is easily scaled to meet all well bore sizes, to cut all likely intervention media and its compact size with rotary actuators means it is ideally suited to the challenging size restrictions of well re-entry on ageing assets.



revolutionTM
valve



Subsea Abandonment Tree

Features	Benefits
Smart, robust, fit-for-purpose design	<ul style="list-style-type: none"> • Easily deployed from lightweight vessel • Minimises loads on Xmas Tree and wellhead
Resilient well bore sealing	<ul style="list-style-type: none"> • Enables valve to be left installed for extended periods
Separate cutting and sealing components in a single device	<ul style="list-style-type: none"> • Eliminates risk of damage to the seal during cutting giving unparalleled post-cut sealing performance
Rotary actuators	<ul style="list-style-type: none"> • Maximises cutting torque • Minimises weight
External actuators	<ul style="list-style-type: none"> • Allows operation by manual or ROV override
Flanged end connections (other end connections are available)	<ul style="list-style-type: none"> • Permits easy integration with existing equipment

Cutting Capability		
Slickline	Up to 10 off 0.160"	
Braided Cable	Up to 2 off 0.520"	
Coiled Tubing	Up to 2 7/8" x 0.204"	

Specifications					
Production Bore	5 1/8"	130 mm	Upper Interface	To suit field safety package or EDP	
Annulus Bore	2 1/16"	52 mm	Lower Interface	To suit Xmas Tree re-entry hub	
Working Pressure	10,000 psi	690 bar	Weight	5,600 lb	2 540 kg
Hydraulic Pressure	3,000 psi	207 bar	Control Fluid	Any oil or water based fluid	

- Manufactured to API6A, PR1/PSL3 requirements as standard, PR2/PSL4 is available on request
- Material Class EE as standard, other trims available on request
- Temperature Class P-V as standard, other ranges available on request



interventek
subsea engineering